



*Gateway  
to the  
San Gabriel Valley*

*111  
South First Street  
Alhambra  
California  
91801-3704*

**ADDENDUM NO. 1**

**2017 HUD SIDEWALK AND ADA RAMP PROJECT  
PHASE II**

**BID NO. N2M17-59**

**IN THE CITY OF ALHAMBRA**

**June 22, 2017**

**NOTICE TO ALL BIDDERS**

The following clarification is issued for the proposed project:

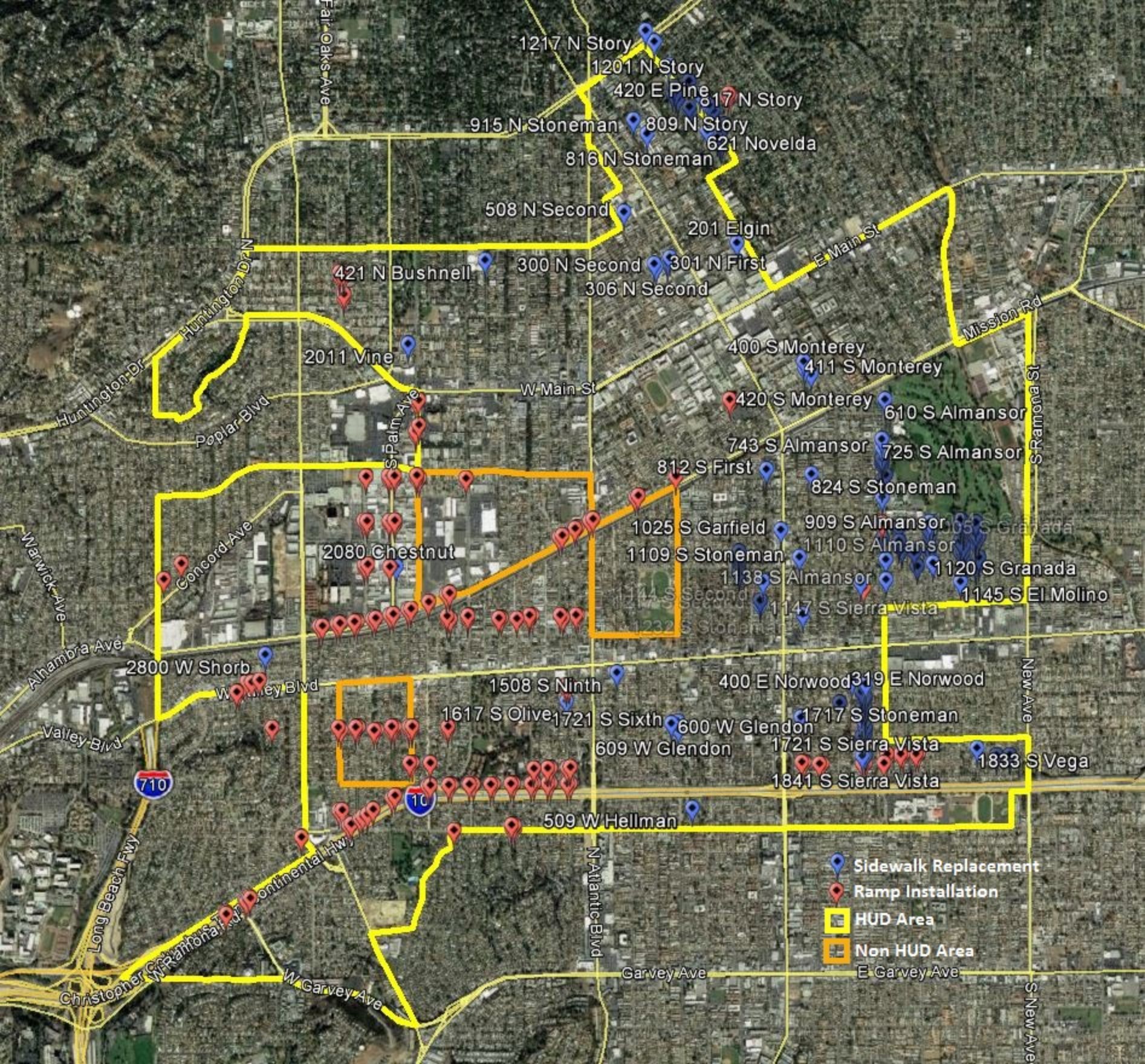
**1. Correction Appendix E – Project Locations**

A handwritten signature in blue ink that reads "Amanda Hamilton". The signature is fluid and cursive.

Amanda Hamilton  
Engineering Associate



## **Appendix E-Project Locations**



- Sidewalk Replacement
- Ramp Installation
- HUD Area
- Non HUD Area

1217 N Story  
 1201 N Story  
 420 E Pine  
 817 N Story  
 915 N Stoneman  
 809 N Story  
 621 Novelda  
 816 N Stoneman

508 N Second  
 201 Elgin  
 300 N Second  
 301 N First  
 306 N Second

421 N Bushnell  
 2011 Vine

400 S Monterey  
 411 S Monterey  
 420 S Monterey  
 610 S Almansor  
 743 S Almansor  
 725 S Almansor

2080 Chestnut  
 812 S First  
 1025 S Garfield  
 909 S Almansor  
 1109 S Stoneman  
 1110 S Almansor  
 1138 S Almansor  
 1145 S El Molino  
 1147 S Sierra Vista  
 1120 S Granada  
 1145 S El Molino

2800 W Shorb  
 1508 S Ninth  
 400 E Norwood  
 319 E Norwood  
 1617 S Olive  
 1721 S Sixth  
 600 W Glendon  
 1717 S Stoneman  
 609 W Glendon  
 1721 S Sierra Vista  
 1833 S Vega  
 1841 S Sierra Vista

509 W Hellman

W Garvey Ave

PHASE II 2017 HUD ADA RAMP PROJECT  
CITY OF ALHAMBRA PUBLIC WORKS - ENGINEERING DIVISION

<b>PHASE II 2017 HUD SIDEWALK AND ADA RAMP PROJECT</b>			
<b>#</b>	<b>Location</b>	<b>Direction</b>	<b>New Installation</b>
1	100 S Raymond Ave, Midblock	East	YES
2	100 S Raymond Ave, Midblock	West	YES
3	2545 Westminster Ave, Alley South of Ramona	N/W	YES
4	2545 Westminster Ave, Alley South of Ramona	S/W	YES
5	2900 W Ramona Rd	N/W	YES
6	2900 W Ramona Rd	S/W	YES
7	2011 W Garvey Ave	N/E	YES
8	2011 W Garvey Ave	S/E	YES
9	Olive and Norwood	S/E	YES
10	Olive and Norwood	N/E	YES
11	Olive and Norwood	N/W	YES
12	Beacon and 2nd	N/W	YES
13	Beacon and 2nd	S/W	YES
14	Concord and Winchester	N/E	YES
15	Concord and Westmont	N/E	YES
16	Curtis and Ramona N	N/W	YES
17	Curtis and Ramona N	N/E	YES
18	Olive and Ramona N	N/W	YES
19	Olive and Ramona N	N/E	YES
20	Cordova and Ross	N/W	YES
21	Cordova and Ross	N/E	YES
22	Hildalgo and Ross	N/W	YES
23	Hildalgo and Ross	N/E	YES
24	Almansor and McLean	N/E	YES
25	Almansor and McLean	S/E	YES
26	Almansor and McLean	S/W	YES
27	Grand and Primrose	N/E	YES
28	Grand and Primrose	N/W	YES
29	Grand and Primrose	S/E	YES
30	Grand and Primrose	S/W	YES

PHASE II 2017 HUD ADA RAMP PROJECT  
CITY OF ALHAMBRA PUBLIC WORKS - ENGINEERING DIVISION

31	Larch and Primrose	N/E	YES
32	Larch and Primrose	S/E	YES
33	Date and Lemon	N/E	YES
34	Date and Orange	N/E	YES
35	Date and Orange	N/W	YES
36	Date and Orange	S/E	YES
37	Chestnut and Date	N/E	YES
38	Chestnut and Date	N/W	YES
39	Chestnut and Date	S/W	YES
40	Lemon and Palm	N/E	YES
41	Lemon and Palm	N/W	YES
42	Lemon and Palm	S/E	YES
43	Lemon and Palm	S/W	YES
44	Orange and Palm	N/E	YES
45	Orange and Palm	N/W	YES
46	Orange and Palm	S/E	YES
47	Orange and Palm	S/W	YES
48	Chestnut and Palm	S/W	YES
49	Pepper and Raymond	N/E	YES
50	Pepper and Raymond	N/W	YES
51	Pepper and Raymond	S/W	YES
52	Lemon and Raymond	N/W	YES
53	Lemon and Raymond	S/E	YES
54	Lemon and Raymond	S/W	YES
55	Glendon and Raymond	N/E	YES
56	Glendon and Raymond	N/W	YES
57	Glendon and Raymond	S/E	YES
58	Glendon and Raymond	S/W	YES
59	Campbell and Glendon	N/W	YES
60	Campbell and Glendon	S/W	YES
61	Glendon and Palm	N/E	YES
62	Glendon and Palm	N/W	YES
63	Glendon and Palm	S/E	YES
64	Glendon and Palm	S/W	YES

PHASE II 2017 HUD ADA RAMP PROJECT  
CITY OF ALHAMBRA PUBLIC WORKS - ENGINEERING DIVISION

65	Date and Glendon	S/E	YES
66	Date and Glendon	S/W	YES
67	Edgewood and Glendon	N/E	YES
68	Edgewood and Glendon	N/W	YES
69	Edgewood and Glendon	S/W	YES
70	Glendon and Primrose	N/W	YES
71	Glendon and Primrose	S/E	YES
72	Glendon and Meridian	N/W	YES
73	Grandview and Norwood	N/E	YES
74	Grandview and Norwood	N/W	YES
75	Grandview and Norwood	S/W	YES
76	Norwood and Pyrenees	S/E	YES
77	Norwood and Pyrenees	S/W	YES
78	Ethel and Ross	N/W	YES
79	Raymond and Ross	N/E	YES
80	Raymond and Ross	N/W	YES
81	Primrose and Ramona N	N/E	YES
82	Primrose and Ramona N	N/W	YES
83	El Paseo and Ramona N	N/W	YES
84	Elm and Front	S/E	YES
85	Elm and Front	S/W	YES
86	Front and Primrose	S/E	YES
87	Front and Primrose	S/W	YES
88	Edgewood and Front	S/E	YES
89	Edgewood and Front	S/W	YES
90	Date and Front	S/E	YES
91	Date and Front	S/W	YES
92	Front and Palm	S/E	YES
93	Front and Palm	S/W	YES
94	Ethel and Front	S/W	YES
95	Front and Raymond	S/E	YES
96	Front and Raymond	S/W	YES
97	Campbell and Front	S/E	YES
98	Campbell and Front	S/W	YES

PHASE II 2017 HUD ADA RAMP PROJECT  
CITY OF ALHAMBRA PUBLIC WORKS - ENGINEERING DIVISION

99	Edith and Front	S/E	YES
100	Edith and Front	S/W	YES
101	Front and Olive	S/E	YES
102	Front and Olive	S/W	YES
103	Atlantic and Front	S/E	YES
104	Atlantic and Front	S/W	YES
105	Front and 8th	S/E	YES
106	Front and 8th	S/W	YES
107	Front and 6th	S/W	YES
108	Campbell and Shorb	N/W	YES
109	Campbell and Shorb	S/E	YES
110	Campbell and Shorb	S/W	YES
111	Marengo and Shorb	N/W	YES
112	Marengo and Shorb	S/W	YES
113	Benito and Shorb	S/E	YES
114	Benito and Shorb	S/W	YES
115	Electric and Shorb	S/E	YES
116	Marguerita and Shorb	N/E	YES
117	Marguerita and Shorb	N/W	YES
118	Marguerita and Shorb	S/W	YES
119	Edith and Shorb	N/W	YES
120	Edith and Shorb	S/E	YES
121	Olive and Shorb	N/E	YES
122	Olive and Shorb	N/W	YES
123	Shorb and Sierra Vista	N/E	YES
124	Marguerita and Ramona N	N/E	YES
125	Ramona N and Stoneman	N/E	YES
126	Ramona N and Stoneman	N/W	YES
127	Monterey and Ramona N	N/E	YES
128	Monterey and Ramona N	N/W	YES
129	Ramona N and Sierra Vista	N/E	YES
130	Ramona N and Sierra Vista	N/W	YES
131	Almansor and Ramona N	N/W	YES
132	Almansor and Ross	N/E	YES

PHASE II 2017 HUD ADA RAMP PROJECT  
CITY OF ALHAMBRA PUBLIC WORKS - ENGINEERING DIVISION

133	Almansor and Ross	S/E	YES
134	Marengo and Pepper	S/W	YES
135	Ramona S and Olive	S/E	YES
136	Ramona S and Olive	S/W	YES
137	Ramona S and Curtis	S/E	YES
138	Ramona S and Curtis	S/W	YES
139	Ramona S and Marguerita	S/E	YES
140	Ramona S and Marguerita	S/W	YES
141	Ramona S and Electric	S/E	YES
142	Ramona S and Electric	S/W	YES
143	Ramona S and Bushnell	S/E	YES
144	Ramona S and Bushnell	S/W	YES
145	Ramona S and Marengo	S/E	YES
146	Ramona S and Marengo	S/W	YES
147	Ramona S and Campbell	S/E	YES
148	Ramona S and Campbell	S/W	YES
149	Ramona S and Ethel	S/E	YES
150	Ramona S and Ethel	S/W	YES
151	Ramona S and Palm	S/E	YES
152	Ramona S and Palm	S/W	YES
153	Ramona S and Hellman	S/E	YES
154	Ramona S and Hellman	S/W	YES
155	Ramona S and Edgewood	S/E	YES
156	Ramona S and Edgewood	S/W	YES
157	Ramona S and Primrose	S/E	YES
158	Ramona S and Primrose	S/W	YES
159	1017 S Almansor, Alley South of Adams	N/W	YES
160	1018 S Almansor, Alley South of Adams	S/W	YES
161	Electric and Pedley	N/E	YES
162	Electric and Pedley	N/W	YES
163	Electric and Pedley	S/E	YES
164	Electric and Pedley	S/W	YES
165	Campbell and Pedley	S/W	YES



PHASE II 2017 HUD ADA RAMP PROJECT  
CITY OF ALHAMBRA PUBLIC WORKS - ENGINEERING DIVISION -SIDEWALK LOCATIONS

PHASE II 2017 HUD SIDEWALK PROJECT				
#	Number	Dir	Street	
1	1138	S	Almansor	5'x50'
2	1110	S	Almansor	5'x50'
3	1037	S	Almansor	5'x50'
4	909	S	Almansor	5'x50'
5	839	S	Almansor	5'x50'
6	830	S	Almansor	5'x50'
7	833	S	Almansor	5'x50'
8	805	S	Almansor	5'x50'
9	811	S	Almansor	5'x50'
10	801	S	Almansor	5'x50'
11	751	S	Almansor	5'x50'
12	743	S	Almansor	5'x50'
13	725	S	Almansor	5'x50'
14	610	S	Almansor	5'x50'
15	612	S	Almansor	5'x50'
16	421	N	Bushnell	5'x50'
17	1624	S	Chapel Ave	5'x50'
18	2080		Chestnut	5'x20'
19	1105	S	Cordova	5'x30'
20	1126	S	Cordova	5'x30'
21	401		Cynthia	5'x50'
22	1145	S	El Molino	5'x60'
23	1132	S	El Molino	5'x20'
24	1116	S	El Molino	5'x20'
25	1105	S	El Molino	5'x20'
26	1040	S	El Molino	5'x20'
27	1033	S	El Molino	5'x50'
28	1020	S	El Molino	5'x50'
29	1008	S	El Molino	5'x50'
30	1009	S	El Molino	5'x50'

PHASE II 2017 HUD ADA RAMP PROJECT  
CITY OF ALHAMBRA PUBLIC WORKS - ENGINEERING DIVISION - SIDEWALK LOCATIONS

31	1016	S	El Molino	5'x50'
32	1104	S	El Molino	5'x50'
33	1124	S	El Molino	5'x50'
34	1005	S	El Molino	5'x50'
35	201	E	Elgin	5'x30'
36	812	S	First	5'x50'
37	301	N	First	5'x190'
38	1025	S	Garfield	10'x50'
39	600	W	Glendon	5'x40'
40	609	W	Glendon	5'x80'
41	1004	S	Granada	5'x50'
42	1005	S	Granada	5'x50'
43	1017	S	Granada	5'x50'
44	1025	S	Granada	5'x50'
45	1101	S	Granada	5'x50'
46	1120	S	Granada	5'x50'
47	1109	S	Granada	5'x20'
48	509	W	Hellman	5'x10'
49	1009	S	Hidalgo	5'x30'
50	1029	S	Hidalgo	5'x30'
51	1033	S	Hidalgo	5'x30'
52	1100	S	Hidalgo	5'x30'
53	420	S	Monterey	5'x30'
54	411	S	Monterey	5'x30'
55	400	S	Monterey	5'x30'
56	1508	S	Ninth	5'x50'
57	319	E	Norwood	5'x10'
58	400	E	Norwood	5'x200'
59	908		Novelda	5'x50'
60	909		Novelda	5'x50'
61	901		Novelda	5'x50'
62	812		Novelda	5'x50'
63	805		Novelda	5'x50'
64	621		Novelda	5'x50'

PHASE II 2017 HUD ADA RAMP PROJECT  
CITY OF ALHAMBRA PUBLIC WORKS - ENGINEERING DIVISION - SIDEWALK LOCATIONS

65	608		Novelda	5'x50'
66	604		Novelda	5'x50'
67	600		Novelda	5'x50'
68	1617	S	Olive	5'x50'
69	420		Pine	5'x200'
70	1400	E	Ross	5'x50'
71	1300	E	Ross	5'x50'
72	1144	S	Second	5'x50'
73	1213	S	Second	5'x50'
74	1217	S	Second	5'x50'
75	300	N	Second	10'x80'
76	306	N	Second	5'x55'
77	508	N	Second	5'x40'
78	1707	S	Sierra Vista	5'x80'
79	1609	S	Sierra Vista	5'x50'
80	1721	S	Sierra Vista	5'x50'
81	1722	S	Sierra Vista	5'x50'
82	1817	S	Sierra Vista	5'x50'
83	1821	S	Sierra Vista	5'x50'
84	1841	S	Sierra Vista	5'x50'
85	1844	S	Sierra Vista	5'x50'
86	1816	S	Sierra Vista	5'x50'
87	1812	S	Sierra Vista	5'x50'
88	1808	S	Sierra Vista	5'x50'
89	1804	S	Sierra Vista	5'x50'
90	1714	S	Sierra Vista	5'x50'
91	1710	S	Sierra Vista	5'x50'
92	1706	S	Sierra Vista	5'x50'
93	1620	S	Sierra Vista	5'x50'
94	1616	S	Sierra Vista	5'x50'
95	1604	S	Sierra Vista	5'x50'
96	1147	S	Sierra Vista	5'x50'
97	1600	S	Sierra Vista	5'x50'
98	1721	S	Sixth	5'x20'

PHASE II 2017 HUD ADA RAMP PROJECT  
CITY OF ALHAMBRA PUBLIC WORKS - ENGINEERING DIVISION - SIDEWALK LOCATIONS

99	1232	S	Stoneman	5'x50'
100	824	S	Stoneman	5'x50'
101	1717	S	Stoneman	5'x50'
102	1109	S	Stoneman	5'x50'
103	816	N	Stoneman Ave	5'x50'
104	1617	N	Story	5'x50'
105	1717	N	Story	5'x50'
106	801	N	Story	5'x50'
107	817	N	Story	5'x50'
108	809	N	Story	5'x50'
109	915	N	Story	5'x50'
110	1217	N	Story	5'x50'
111	1201	N	Story	5'x50'
112	915	N	Story Pl	5'x75'
113	1137	S	Third	5'x50'
114	1129	S	Third	5'x50'
115	1121	S	Third	5'x50'
116	1117	S	Third	5'x50'
117	1115	S	Third	5'x50'
118	1109	S	Third	5'x50'
119	1105	S	Third	5'x50'
120	1101	S	Third	5'x50'
121	1125	S	Vega	5'x50'
122	1120	S	Vega	5'x50'
123	1112	S	Vega	5'x30'
124	1037	S	Vega	5'x30'
125	1029	S	Vega	5'x50'
126	1028	S	Vega	5'x50'
127	1025	S	Vega	5'x30'
128	1009	S	Vega	5'x30'
129	1833		Vega	5'x50'
130	2011		Vine	5'x50'
131	101	W	Woodward	10'x320'