

**AGENDA**  
**CITY OF ALHAMBRA**  
**TRANSPORTATION COMMISSION**  
REGULAR MEETING

March 12, 2008    7:00 p.m.    Alhambra City Hall    Conference Room A

1.    Call to Order

2.    Roll Call

Adele Andrade-Stadler	Luis Arizmendez
James Bullard	Denis Kerechuk
Sergio Chavez	Alan Niño
Steven Cosci	Chuck Reyes
David Duarte	Gabriela Quintana

3.    Stop Sign Safety Review: Intersection of Westmont Drive and Keats Street

Staff will review the stop sign safety report that was prepared for the installation of a stop sign on Keats Street at Westmont Drive.

Recommended Action:

It is recommended that the Transportation Commission review the report with the City Engineer, listen to public comment and authorize staff to implement the additional safety measures as outlined in the report. Further, it is recommended that the Transportation Commission recommend approval to the City Council installation of a stop sign on Keats Street at Westmont Drive.

4.    Stop Sign Safety Review: Meridian Avenue at the intersections of Ross Avenue and La Golondrina Avenue.

Staff will review the stop sign safety report that was prepared for the installation of stop signs on Ross Avenue at Meridian and on La Golondrina at Meridian Avenue.

Recommended Action:

It is recommended that the Transportation Commission review the report with the City Engineer, listen to public comment and authorize staff to implement the additional safety measures as outlined in the report. Further, it is recommended that the Transportation Commission recommend approval to the City Council installation of stop signs on Ross Avenue at Meridian Avenue and on La Golondrina at Meridian Avenue.

5. Stop Sign Safety Review: Intersection of Winchester Avenue and Stockbridge Avenue.

Staff will review the stop sign safety report that was prepared for the installation of a stop sign on Winchester Avenue at Stockbridge Avenue.

Recommended Action:

It is recommended that the Transportation Commission review the report with the City Engineer, listen to public comment and authorize staff to implement the additional safety measures as outlined in the report. Further, it is recommended that the Transportation Commission recommend approval to the City Council installation of a stop sign on Winchester Avenue at Stockbridge Avenue.

6. Traffic Safety Review: Ethel Avenue south of Valley Blvd.

Staff will review the traffic safety review report that was prepared for Ethel Avenue south of Valley Blvd.

Recommended Action

It is recommended that the Transportation Commission review the report with the City Engineer, listen to public comment and authorize staff to implement the additional safety measures as outlined in the report.

7. Traffic Safety Review: Ross Avenue north of Hellman Avenue

Staff will review the traffic safety review report that was prepared for Ross Avenue north of Hellman Avenue.

Recommended Action

It is recommended that the Transportation Commission review the report with the City Engineer, listen to public comment and authorize staff to implement the additional safety measures as outlined in the report.

8. Traffic Safety Review: Westmont Drive south of Hellman Avenue

Staff will review the traffic safety review report that was prepared for Westmont Drive south of Hellman Avenue.

Recommended Action

It is recommended that the Transportation Commission review the report with the City Engineer, listen to public comment and authorize staff to implement the additional safety measures as outlined in the report.

9. Traffic Safety Review: Pine Avenue between Huntington Drive and Atlantic Blvd.

In December, 2007, the City Engineer presented a traffic safety review for Pine Street between Huntington Drive and Atlantic Blvd. Several recommendations

were outlined that would assist with traffic safety in the area. During the months of December, 2007 and January, 2008, these measures were implemented by both the City of Alhambra and the City of South Pasadena. The City Engineer has conducted a study to see the effects of the traffic calming measures. This report will be presented at the meeting.

Recommended Action

It is recommended that the Transportation Commission review the report with the City Engineer, listen to public comment and take action as required.

10. Public Comments

Comments must pertain to the business of the Transportation Commission. Kindly limit all oral communications to five (5) minutes

11. Comments and concerns from Commission Members and/or Staff.

Comments, concerns or discussion on any item(s) not specified on the agenda. Items discussed must pertain to the business of the Alhambra Transportation Commission.

12. Adjournment

Adjournment to a regular meeting on Wednesday, May 14, 2008 at 7:00 p.m.

Copies of staff reports or other written documentation, if any, relating to each item of business described above are on file in the Alhambra City Hall, Public Works Department, 111 S. First Street, Alhambra California 91801 and are available for public inspection upon request during regular business hours of 8:00am to 5:00pm, Monday through Friday.

Should any person have a question concerning any of the above agenda items prior to the meeting described herein, he or she may contact Mary Swink, Director of Public Works, either in person at the Public Works Department at Alhambra City Hall, 111 South First Street, or by calling via telephone at (626) 570-5067 during regular business hours.

**TO:** Alhambra Transportation Commission

**FROM:** Mary K. Swink, Director of Public Works

**PREPARED BY:** Ali Cayir, PE, City Engineer  
Jana Robbins, Senior Transportation Analyst

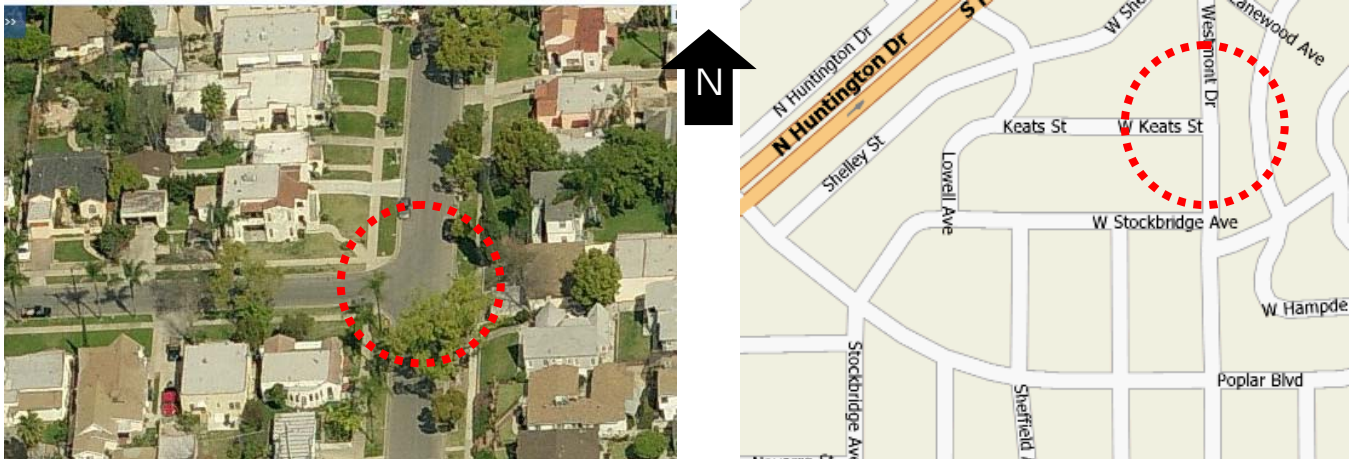
**SUBJECT:** Stop Sign Safety Review: Intersection of Westmont Drive and Keats Street

**PURPOSE:**

To request the Transportation Commission to review the stop sign safety study for the intersection of Westmont Drive and Keats Street.

**BACKGROUND:**

In response to public requests, the City Engineer conducted a safety review at the intersection of Westmont Drive and Keats Street. The intersection is located in a residential area. It is a 3-legged intersection, with Westmont Drive making up the north-south approach, and Keats Street making up the west approach.



Currently there are no stop controls at the intersection. Westmont Drive carries more traffic than Keats Street. Parking is allowed on both sides of each street. There is a vertical slope north of the intersection on Westmont Drive. No speed limit signs are posted on Westmont Drive. There was one reported accident at this intersection in 2007. The accident was a head on hitting a fixed object west of the intersection.

**ANALYSIS:**

The California Manual of Traffic Control Devices (MUTCD) mandates when stop signs can or should be installed. A stop on a minor street is warranted under the following conditions:

- A. Intersection of a less important road with a main road where application of the normal right of way rule would not be expected to provide reasonable compliance with the law.
- B. Street entering a through highway or street.
- C. Unsignalized intersection in a signalized area; and/or high speeds, restricted view or crash records indicate a need for control by a stop sign.
- D. Stop signs should not be used to control speed, and should be installed on the street carrying the lowest volume of traffic. All-way stop control requires additional applications and warrants that must be met. (Section 2B.07 MUTCD)

In order to improve safety at this intersection and prevent potential driver confusion as to the right-of-way, the City Engineer recommends the installation of a stop sign on Keats Street. In addition, approximately 10' of red curb paint should be installed at corners where red curb currently does not exist to prevent vehicles parking too close to the intersection hindering the visibility of approaching traffic. Implementation of the recommended improvements will improve safety at this intersection.

**RECOMMENDATION:**

It is recommended that the Transportation Commission review the report with the City Engineer, listen to public comment and authorize staff to implement the additional traffic safety measures as outlined above. Further, it is recommended that the Transportation Commission recommend approval of the installation of a stop sign as outlined above to the City Council.

March 12, 2008

ITEM NO. 4

**TO:** Alhambra Transportation Commission

**FROM:** Mary K. Swink, Director of Public Works

**PREPARED BY:** Ali Cayir, PE, City Engineer

Jana Robbins, Senior Transportation Analyst

**SUBJECT:** Stop Sign Safety Review: Meridian Avenue at the intersections of Ross Avenue and La Golondrina Avenue

**PURPOSE:**

To request the Transportation Commission to review the Stop Sign Safety Study along Meridian Avenue at the intersections of Ross Avenue and La Golondrina Avenue.

**BACKGROUND:**

In response to public requests, the City Engineer conducted a safety review along Meridian Avenue from Ross Avenue to La Golondrina Avenue. Meridian Avenue north of Hellman Avenue is located in a residential area. Meridian Avenue has several “Y” shaped intersections with no stop control.



Currently there are no stop controls at either intersection. Both streets are similar in characteristics, including land use and street width. There is a four-way stop at Ramona Terrace. Field observations have indicated drivers are sometimes confused and anticipate that the other direction has a stop sign, and would proceed. There were no reported accidents 2005 to the first quarter of 2007.

**ANALYSIS :**

In order to improve safety at these intersections and prevent potential driver confusion as to the right-of-way, it is recommended to install a stop sign on Ross Avenue at its intersection with Meridian Avenue and on La Golondrina Avenue at its intersection with Meridian Avenue. In addition, approximately 10' of red curb paint

should be installed at corners where red curb currently does not exist to prevent vehicles parking too close to the intersection thus hindering the visibility of approaching traffic.

## **RECOMMENDATION**

It is recommended that the Transportation Commission review the report with the City Engineer, listen to public comment and authorize staff to implement the additional traffic safety measures as outlined above. Further, it is recommended that the Transportation Commission recommend approval of the installation of two stop signs as outlined above to the City Council.

**TO:** Alhambra Transportation Commission

**FROM:** Mary Swink, Public Works Director

**PREPARED BY:** Ali Cayir, PE, City Engineer  
Jana Robbins, Senior Transportation Analyst

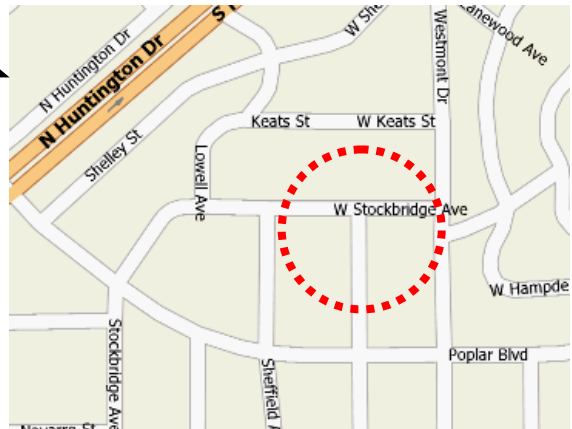
**SUBJECT:** Stop Sign Safety Review: Intersection of Winchester Avenue and Stockbridge Avenue

**PURPOSE:**

To request the Transportation Commission to review the stop sign safety study for the intersection of Winchester Avenue and Stockbridge Avenue.

**BACKGROUND:**

In response to public requests, the City Engineer conducted a safety review at the intersection of Winchester Avenue and Stockbridge Avenue. The intersection is located in a residential area. It is a 3-legged intersection, with Winchester Avenue making up the south approach, and Stockbridge Avenue making up the east - west approach.



Currently there are no stop controls at the intersection. Both streets are similar in characteristics, including land use, traffic volumes and street width.

**ANALYSIS:**

Field observations have indicated drivers are sometimes confused and anticipate that the other direction has a stop sign, and would stop. In order to improve safety at the intersection and prevent potential driver confusion as to the right-of-way, the City Engineer recommends the installation of a stop sign on Winchester Avenue. In addition, approximately 10' of red curb paint should be installed at corners where red curb currently does not exist to prevent vehicles parking too close to the intersection thus hindering the visibility of approaching traffic. Implementation of the recommended improvements will improve safety at this intersection.

## **RECOMMENDATION**

It is recommended that the Transportation Commission review the report with the City Engineer, listen to public comment and authorize staff to implement the additional traffic safety measures as outlined above. Further, it is recommended that the Transportation Commission recommend approval of the installation of the stop sign as outlined above to the City Council

March 12, 2008

ITEM NO. 6

TO: Alhambra Transportation Commission  
FROM: Mary K. Swink, Director of Public Works  
PREPARED BY: Ali Cayir, PE, City Engineer  
Jana Robbins, Senior Transportation Analyst

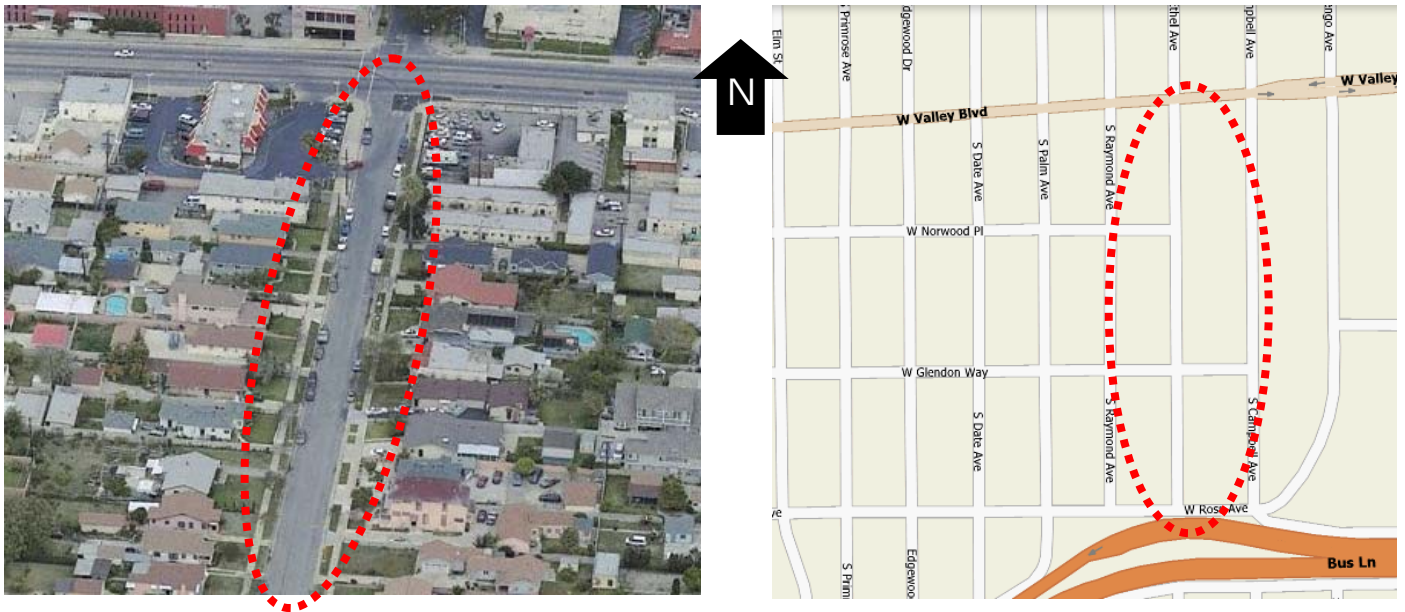
SUBJECT: Traffic Safety Review: Ethel Avenue South of Valley Boulevard

**PURPOSE:**

To request the Transportation Commission to review the traffic safety study for Ethel Avenue south of Valley Boulevard.

**BACKGROUND:**

In response to public requests, the City Engineer conducted a safety review along Ethel Avenue south of Valley Boulevard. The street is considered a north-south residential street with a low volume of traffic. During peak times Ethel Avenue gets some cut-thru traffic from Ross Avenue from vehicles trying to avoid the congestion on Fremont Avenue. There is one lane in each direction with parking on both sides. Two-way stop control is located on Ethel Avenue at Glendon Way and at Ross Avenue. No speed limit signs are posted along Ethel Avenue from Valley Boulevard to Ross Avenue.



Speed limits are mandated or controlled by the California Vehicle Code 22352 and the basic speed law which states that no person shall drive a vehicle on a highway at a speed greater than is reasonable or prudent. The California Vehicle Code has set prima facie or maximum limits for residential streets at 25 mph. There was one reported accident on Ethel Avenue at Valley Boulevard in 2007, which was a turn onto Valley Boulevard from Ethel Avenue.

**ANALYSIS:**

In order to improve safety along Ethel Avenue the following measures should be implemented:

1. 25 MPH speed limit signs should be installed per the California Manual of Traffic Control Devices (MUTCD) and the California Vehicle Code 22352 on Ethel Avenue south of Valley Boulevard for southbound vehicles and north of Ross Avenue for northbound vehicles.
2. The police department shall be contacted in order to provide additional speed enforcement during peak traffic hours.

**RECOMMENDATION:**

It is recommended that the Transportation Commission review the report with the City Engineer, listen to public comment and authorize staff to implement the additional traffic safety measures as outlined above.

**TO:** Alhambra Transportation Commission

**FROM:** Mary K. Swink, Director of Public Works

**PREPARED BY:** Ali Cayir, PE, City Engineer  
Jana Robbins, Senior Transportation Analyst

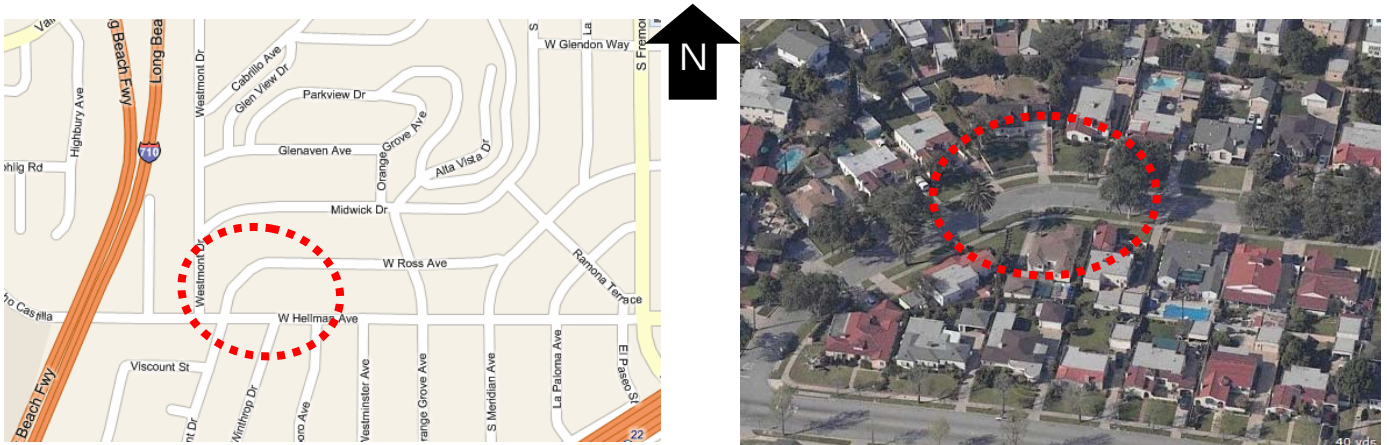
**SUBJECT:** Traffic Safety Review: Ross Avenue North of Hellman Avenue

**PURPOSE:**

To request the Transportation Commission to review the traffic safety study for Ross Avenue north of Hellman Avenue

**BACKGROUND:**

In response to public requests, the City Engineer conducted a safety review along Ross Avenue between Hellman Avenue and Meridian Avenue. Ross Avenue is a 1 lane residential street with parking allowed on both sides. Two-way stop control is located on Ross Avenue at Hellman Avenue. No speed limit signs are posted along Ross Avenue. There is a horizontal curve around the 3000 block of Ross Avenue and residents have complained that vehicles are traveling too fast through this section of Ross Avenue.



Speed limits are mandated or controlled by the California Vehicle Code 22352 and the basic speed law which states that no person shall drive a vehicle on a highway at a speed greater than is reasonable or prudent. The California Vehicle Code has set prima facie or maximum limits for residential streets at 25 mph. Section 2C.06 and 2C.07(CA) of the California MUTCD provides guidance when determining the need for an advisory turn warning sign. A curve warning sign can be considered in advance of a curve when the speed in the curve is at least 10 mph lower than the approach speed. A supplemental speed sign may be used with engineering judgment.

There were no reported accidents on Ross Avenue between Hellman Avenue and Meridian Avenue 2005 to 2007.

**ANALYSIS:**

In order to improve safety at the curve along Ross Avenue the following measures should be implemented:

1. 25 MPH speed limit signs should be installed per the California Manual of Traffic Control Devices (MUTCD) and the California Vehicle Code 22352 on Ross Avenue west of Meridian Avenue for westbound vehicles and north of Hellman Avenue for northbound vehicles.
2. Place supplementary (W1-2) curve advisory signs on both sides of the horizontal curve. CA MUTCD Section 2C.07.

**RECOMMENDATION:**

It is recommended that the Transportation Commission review the report with the City Engineer, listen to public comment and authorize staff to implement the additional traffic safety measures as outlined above.

March 12, 2008

ITEM NO. 9

**TO:** Alhambra Transportation Commission  
**FROM:** Mary K. Swink, Director of Public Works  
**SUBJECT:** Traffic Safety Review: Pine Street between Huntington Drive and Atlantic Blvd

**REPORT & PRESENTATION WILL BE SUBMITTED AT THE MEETING**